

1

TWO EYED SEEING

- To see from one eye with the strengths of Indigenous ways of knowing, and to see from the other eye with the strengths of Western ways of knowing, and to use both of these eyes together, for the benefit of all. (Bartlett, Marshall, & Marshall, 2012, p. 335)
- Embedded is the belief that no one perspective is right or wrong; all views are seen to contribute something unique and important
- Encourages fluidity, multiple perspectives, and the use of self-reflection to pose questions and critically consider the partiality of one's perspective (Martin, 2012).

2

AGENDA SETTING USING TWO EYED SEEING

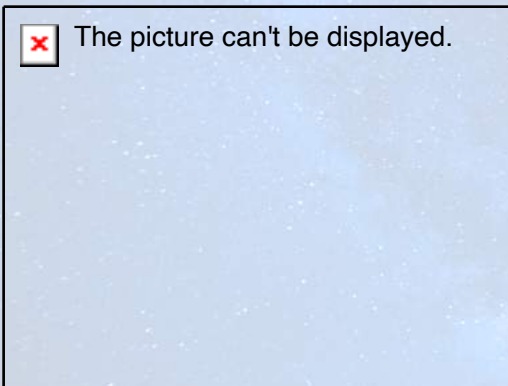
- Lays the groundwork for initiatives and policies
- Usually set by funders and decision makers
 - Based on their interpretation of a highly visible issue
 - Directed by the interests, evidence and priorities
- Two eyed seeing demands:
 1. Multiple interpretation of the issue
 2. Making space to learn alternate interpretations
 3. Reciprocity and dialogue
 4. Assessing collective benefit



3

CFHI COLLABORATIVE - TRANSFORMING LANGUAGE

SUICIDE PREVENTION




LIFE PROMOTION




4

TWO EYED
SEEING
VALUES
WAYS OF
KNOWING



RECONCILIATION
IS ABOUT
SHIFTING
TO A
STRENGTHS BASED
PARADIGM

5



WE HAVE LOTS OF EXPERIENCE WHERE EVIDENCE
HAS NOT SERVED INDIGENOUS PEOPLE WELL

6

The application of two-eyed seeing as a
guiding principle can bridge the divide
between power and understanding.

(Hall et al, 2015)

7

DECISION MAKING THROUGH THE LENS OF TWO EYED SEEING

- System leaders seen as responsible to formulate the policy and plan
 - Potential consultation with the voices of lived experiences
 - Advocacy efforts to gain priority influence and interpretation
- Creates challenges and barriers for those affected by the policy
- Two eyed seeing helps manage discussions on contributions and tensions between Indigenous and non-Indigenous processes
- Two-eyed seeing supports conscious decisions to activate the right lens based on which one is more appropriate to use given the circumstances at hand.
 - Indigenous governance
 - Indigenous evidence

8

FIRST NATION HEALTH AUTHORITY AS A SYSTEMS MODEL OF TWO EYED SEEING

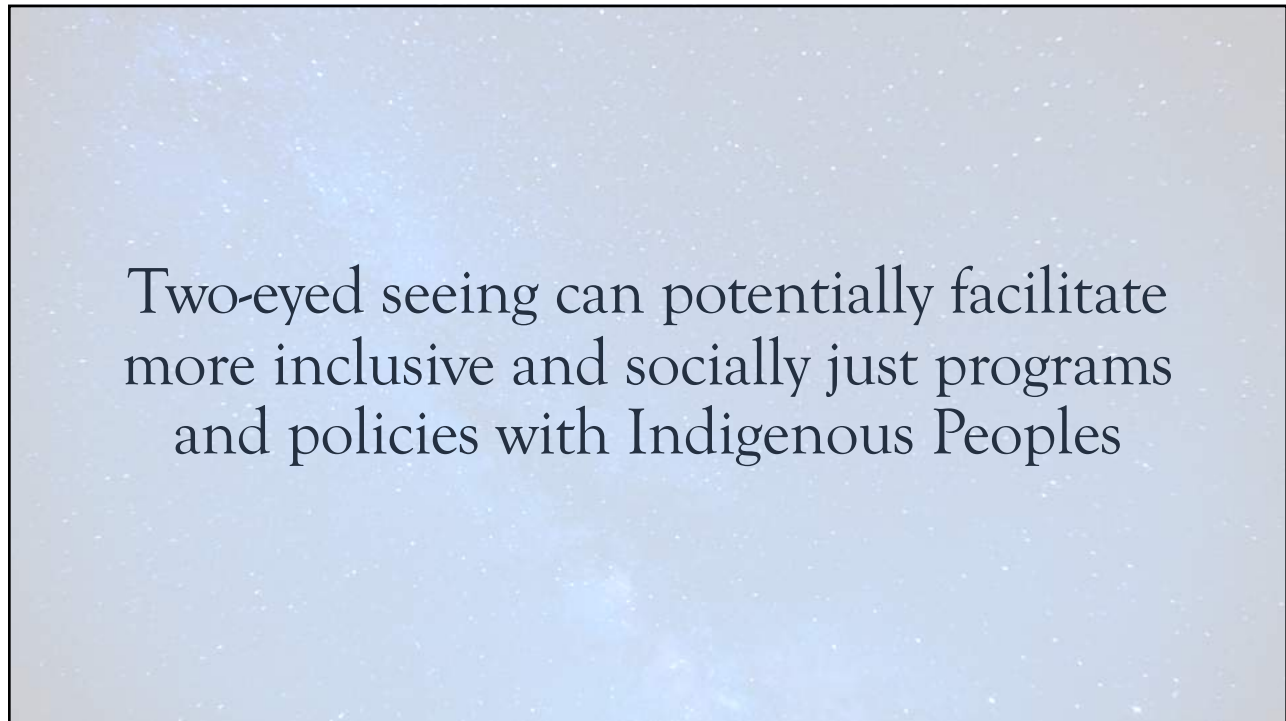
- First Nation governance of First Nation health in BC
 - Supports individual Nations self-determination and capacity building as well
 - Equitable power to provincial health systems
- Core tenet to the system is culture and traditional healing and wellness
 - De-privileging the bio-medical model
 - Decolonizing Indigenous evidence
- Applies the lens to health care using the best knowledge of First Nation and Western ways of knowing
 - Focus on wellness and strengths based
- Improved quality care system

9

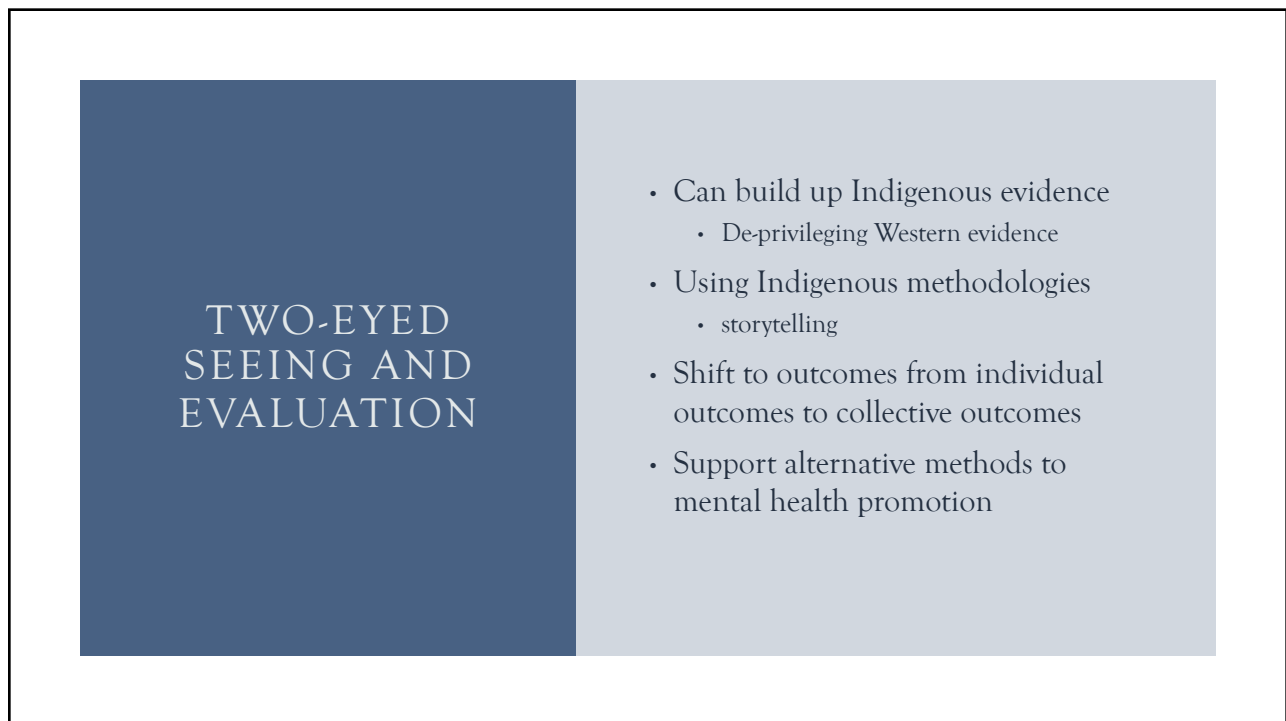
TWO EYED SEEING FOR RELATIONSHIP BUILDING

- Facilitates the interdisciplinary and intersectoral community engagement that is required for effective policy design, implementation, and application (Black & McBean, 2016).
- Two-eyed seeing offers guidance for managing the contributions and tensions between Indigenous and Western processes.
- Two-eyed seeing can support:
 - Honoring humanity and life experiences in the process of becoming
 - Connectedness
 - Heals relationships
 - Valuing and learning from diversity
 - Listen deeply to others and hold space for dignity to be protected and expressed
 - Radical acceptance
 - Respect
 - Collective healing and planning

10



11



12



Miigwech, Thank You, Merci

Questions or Comments?